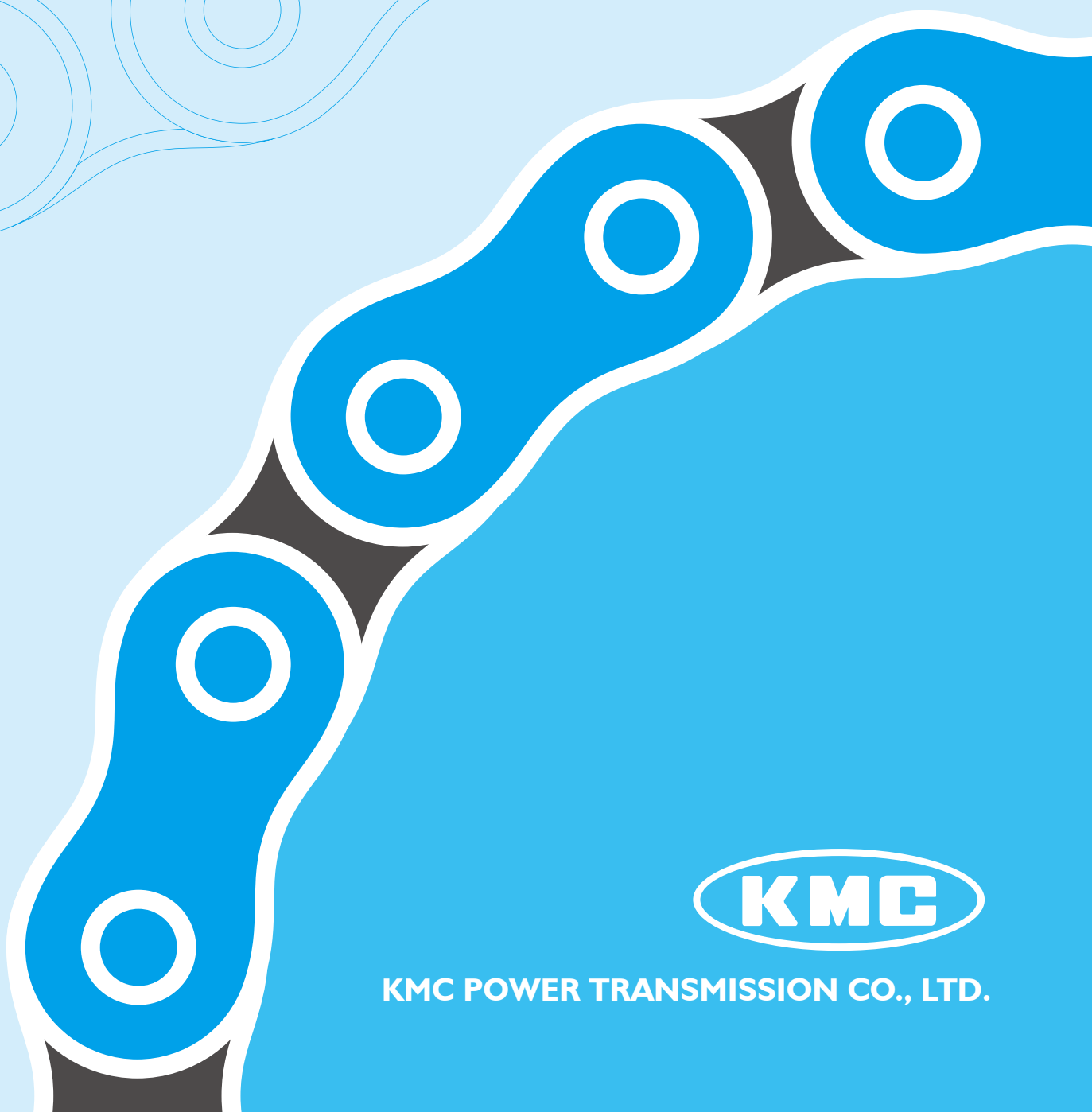


KMC CHAIN

ISO 9001-2015 CERTIFIED



KMC POWER TRANSMISSION CO., LTD.

Connecting People, Transmitting Power.



www.kmcgroup.com.tw



www.kmcgroup.com.tw

KMC is an ISO 9001:2008 Certified Roller Chain Manufacturer



Certified by International Quality Control System which promises products credibility



Proposed products of international trade



Recommended certificate of high-quality products



Brand of exhibition in international

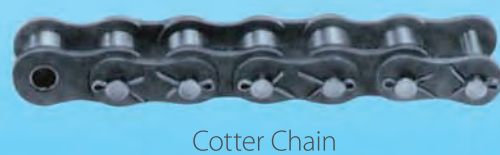
Seeking perfection and responsibility for great customers, KMC attains international acceptance

KMC also strives to maintain its world recognized quality assurance system for stable supply of quality products, which meets and exceeds the expectations of our noblest customers.



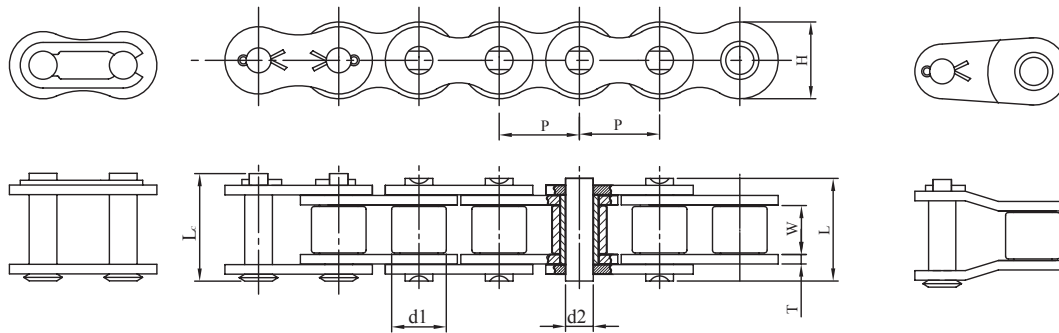


ROLLER CHAIN COMPONENTS & FEATURES



A Series Standard Roller Chain

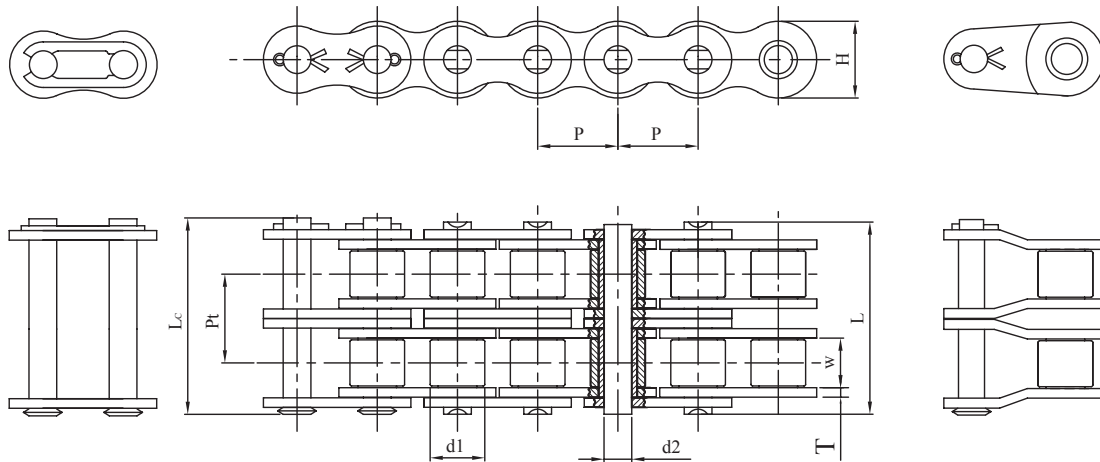
Single strand roller & bushing chain



ISO Chain No	ANSI Chain No	KMC Chain No	Pitch	Roller Link Width	Roller Outer Diameter	Pin Outer Diameter	Pin Length		Link Plate Height	Link Plate Thickness	Minimum Tensile Strength	Average Tensile Strength	Allowed Load
			P	W min	d1 max	d2 max	L max	Lc max	H max	T	min	max	
			mm	mm	mm	mm	mm	mm	mm	mm	kgf	kgf	kgf
04C	25	25	6.35	3.10	3.30	2.31	8.0	8.80	6.02	0.75	360	400	65
		25H	6.35	3.10	3.30	2.31	9.00	10.0	5.90	1.00	550	650	100
06C	35	35	9.525	4.68	5.08	3.60	12.15	13.40	9.05	1.15	810	1100	220
083		415E	12.70	4.88	7.77	3.97	12.90	13.45	10.30	1.1/1.4	1185	1390	380
084		415H	12.70	4.68	7.77	3.97	13.30	15.00	12.00	1.50	1810	1900	380
085	41	41	12.70	6.25	7.77	3.60	14.0	16.0	9.91	1.20	680	1250	230
08A	40	40	12.70	7.85	7.92	3.98	17.80	21.0	12.07	1.50	1420	1950	370
10A	50	50	15.875	9.40	10.16	5.09	21.80	25.0	15.09	2.0	2230	3000	650
12A	60	60	19.05	12.57	11.91	5.96	26.90	31.0	18.0	2.35	4000	4100	920
16A	80	80	25.40	15.75	15.88	7.94	33.50	38.0	24.13	3.20	5680	7500	1500
20A	100	100	31.75	18.90	19.05	9.54	41.10	47.0	30.17	4.0	8880	12100	2300
24A	120	120	38.10	25.22	22.23	11.11	50.80	57.0	36.20	4.70	12770	16000	3100
28A	140	140	44.45	25.22	25.40	12.71	54.90	62.0	42.23	5.50	17380	21000	4100
32A	160	160	50.80	31.55	28.58	14.29	65.50	73.0	48.26	6.40	22800	30000	5400
40A	200	200	63.50	37.85	39.68	19.85	80.40	90.0	60.33	8.0	35460	46000	7300
48A	240	240	76.20	47.35	47.63	23.81	95.50	106.0	72.39	9.50	53110	67500	10100

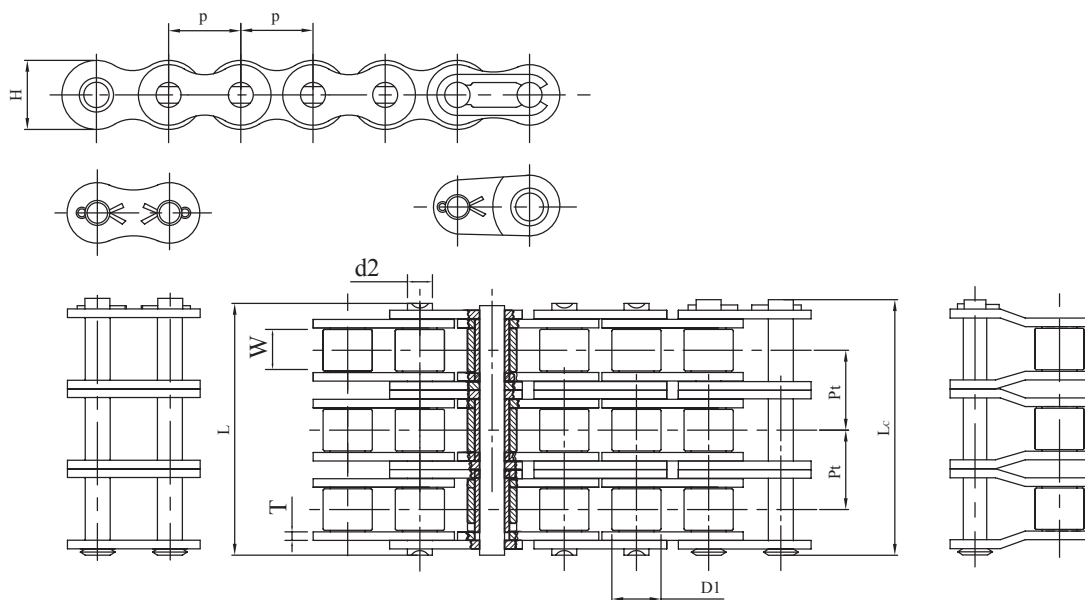
A Series Standard Roller Chain

Double strand roller & bushing chain



ISO Chain No	ANSI Chain No	KMC Chain No	Pitch	Roller Link Width	Roller Outer Diameter	Pin Outer Diameter	Pin Length		Link Plate Height	Link Plate Thickness	Minimum Tensile Strength	Average Tensile Strength	Allowed Load	Transverse Pitch Of Strand
			P	W min	d1 max	d2 max	L max	Lc max	H max	T	min	max	Pt	
			mm	mm	mm	mm	mm	mm	mm	mm	kgf	kgf	kgf	mm
04C-2	25-2	25-2	6.35	3.10	3.30	2.31	14.50	15.20	6.02	0.75	720	860	110	6.40
06C-2	35-2	35-2	9.525	4.68	5.08	3.60	22.80	23.70	9.05	1.15	1620	2200	370	10.13
08A-2	40-2	40-2	12.70	7.85	7.92	3.98	32.30	36.20	12.07	1.50	2840	3900	630	14.38
10A-2	50-2	50-2	15.875	9.40	10.16	5.09	39.90	44.0	15.09	2.0	4450	6200	1100	18.11
12A-2	60-2	60-2	19.05	12.57	11.91	5.96	49.80	54.40	18.10	2.35	6400	8400	1530	22.78
16A-2	80-2	80-2	25.40	15.75	15.88	7.94	62.70	68.10	24.13	3.20	11360	15000	2550	29.29
20A-2	100-2	100-2	31.75	18.90	19.05	9.54	77.0	83.10	30.17	4.0	17760	24200	3900	35.76
24A-2	120-2	120-2	38.10	25.22	22.23	11.11	96.30	102.9	36.20	4.70	25540	32000	5250	45.44
28A-2	140-2	140-2	44.45	25.22	25.40	12.71	103.60	111.0	42.23	5.50	34760	42000	6970	48.87
32A-2	160-2	160-2	50.80	31.55	28.58	14.29	124.20	132.10	48.26	6.40	45600	60000	9150	58.55
40A-2	200-2	200-2	63.50	37.85	39.68	19.85	151.90	162.10	60.33	8.0	70920	92000	12400	71.55
48A-2	240-2	240-2	76.20	47.35	47.63	23.81	183.40	193.90	72.39	9.50	106220	135000	17150	87.83

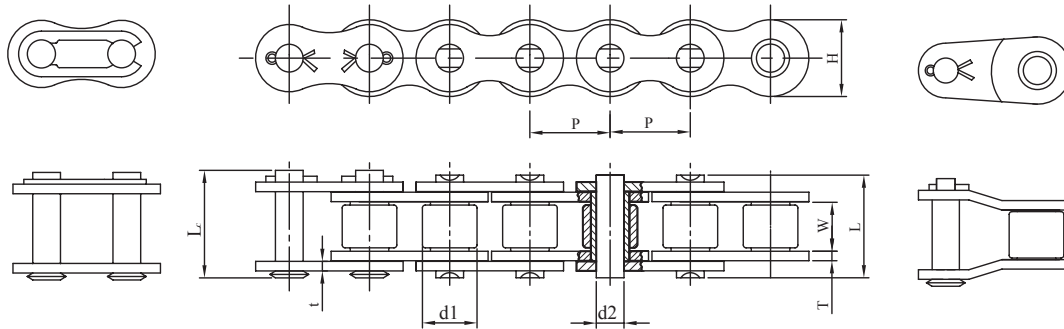
A Series Standard Roller Chain



ISO Chain No	ANSI Chain No	KMC Chain No	Pitch	Roller Link Width	Roller Outer Diameter	Pin Outer Diameter	Pin Length		Link Plate Height	Link Plate Thickness	Minimum Tensile Strength	Average Tensile Strength	Transverse Pitch Of Strand
			P	W min	d1 max	d2 max	L max	Lc max	H max	T	min		Pt
			mm	mm	mm	mm	mm	mm	mm	mm	mm	kgf	kgf
04C-3	25-3	25-3	6.35	3.10	3.30	2.31	21.80	23.80	5.80	0.75	1075	1397	6.40
06C-3	35-3	35-3	9.525	4.68	5.08	3.60	33.50	36.50	8.80	1.15	2420	3146	10.13
08A-3	40-3	40-3	12.70	7.85	7.92	3.98	46.70	49.70	12.0	1.50	4250	5525	14.38
10A-3	50-3	50-3	15.875	9.40	10.16	5.09	57.90	60.90	15.0	2.0	6675	8677	18.11
12A-3	60-3	60-3	19.05	12.58	11.91	5.96	72.60	76.60	18.0	2.35	9535	12395	22.78
16A-3	80-3	80-3	25.40	15.75	15.87	7.94	91.90	96.0	24.10	3.20	17050	22165	29.29
20A-3	100-3	100-3	31.75	18.90	19.05	9.54	113.0	118.0	30.10	4.0	26560	34528	35.76
24A-3	120-3	120-3	38.10	25.23	22.22	11.11	141.70	147.70	36.20	4.70	38200	49660	45.44
28A-3	140-3	140-3	44.45	25.23	25.40	12.71	152.40	158.50	42.20	5.50	51750	67275	48.87
32A-3	160-3	160-3	50.80	31.55	28.57	14.29	182.90	189.0	48.20	6.40	68100	88530	58.55
40A-3	200-3	200-3	63.50	37.85	39.67	19.85	206.0	214.0	60.30	8.0	106500	138450	71.55
48A-3	240-3	240-3	76.20	47.35	47.62	23.81	227.20	235.50	72.40	9.50	153200	199160	87.83

B Series Standard Roller Chain

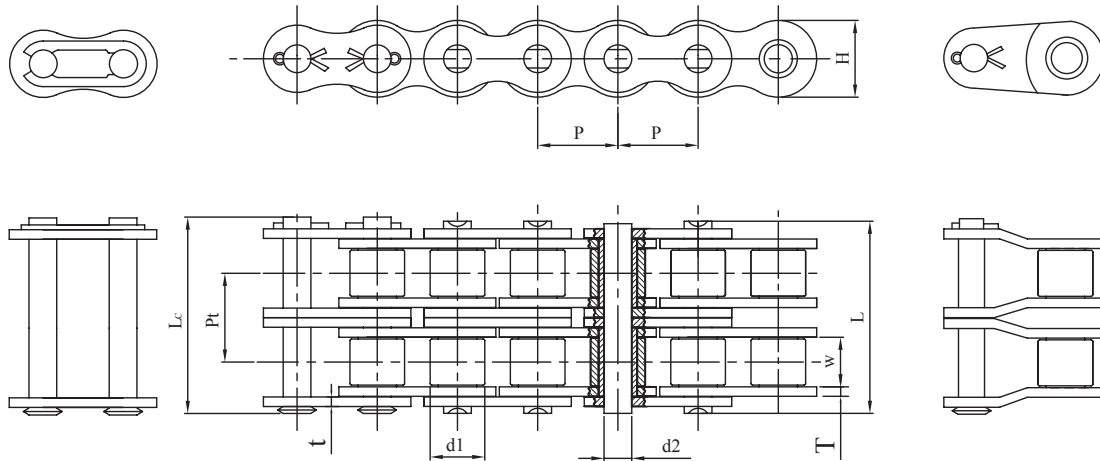
Single strand roller chain



ISO Chain No	KMC Chain No	Pitch	Roller Link Width	Roller Outer Diameter	Pin Outer Diameter	Pin Length		Link Plate Height	Link Plate Thickness	Minimum Tensile Strength	Average Tensile Strength
		P	W min	d1 max	d2 max	L max	Lc max	H max	T/t	min	
		mm	mm	mm	mm	mm	mm	mm	mm	mm	kgf
04B	04B	6.0	2.80	4.10	1.85	7.40	10.30	5.0	0.60	306	320
05B	05B	8.0	3.0	5.0	2.31	8.60	11.70	7.11	0.75	500	600
06B	06B	9.525	5.72	6.35	3.28	13.50	16.80	8.26	1.40/1.10	910	1100
08B	08B	12.70	7.75	8.51	4.45	17.0	20.70	11.81	1.50	1820	1950
10B	10B	15.875	9.65	10.16	5.08	19.60	23.70	14.73	1.70	2270	2800
12B	12B	19.05	11.68	12.07	5.72	22.70	27.30	16.10	1.80	2950	3350
16B	16B	25.40	17.02	15.88	8.28	36.10	41.50	21.0	4.0/3.0	6130	7500
20B	20B	31.75	19.56	19.05	10.19	43.20	49.30	26.42	4.50/3.50	9700	10850
24B	24B	38.10	25.40	25.40	14.63	53.40	60.0	33.40	6.0/5.0	16330	18200
28B	28B	44.45	30.99	27.94	15.90	65.10	72.50	37.08	7.40/6.40	20410	23000
32B	32B	50.80	30.99	29.21	17.81	67.40	75.30	42.29	7.0/6.0	25520	28500
40B	40B	63.50	38.10	39.37	22.89	82.60	92.60	52.96	8.50/8.0	36230	40500
48B	48B	76.20	45.72	48.26	29.24	99.10	109.10	63.88	12.0/9.50	57150	63500

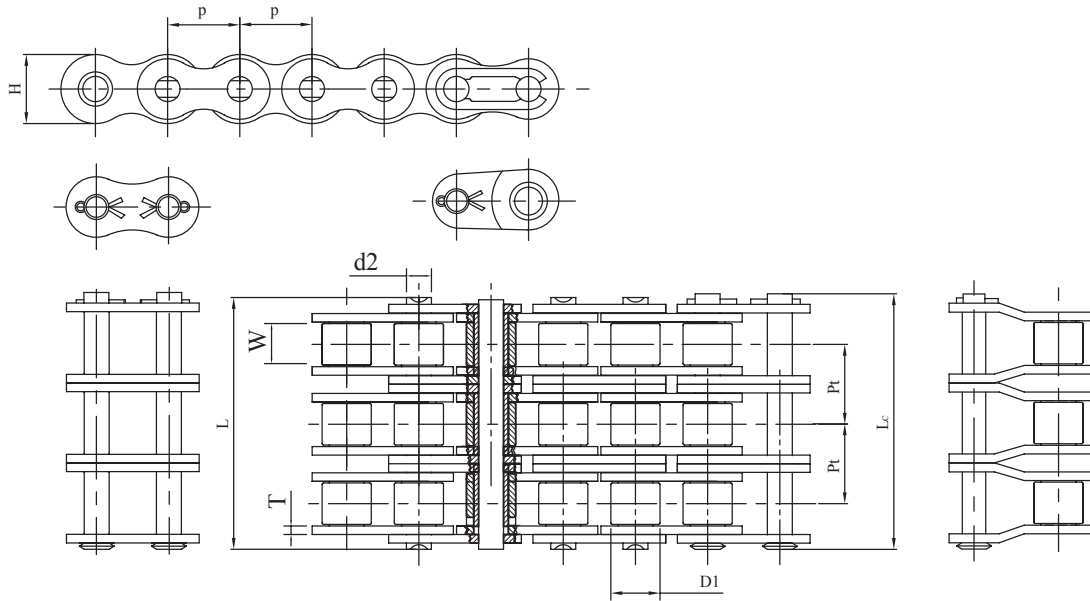
B Series Standard Roller Chain

Double-strand roller chain



ISO Chain No	KMC Chain No	Pitch	Roller Link Width	Roller Outer Diameter	Pin Outer Diameter	Pin Length		Link Plate Height	Link Plate Thickness	Minimum Tensile Strength	Average Tensile Strength	Transverse Pitch Of Strand
		P	W min	d1 max	d2 max	L max	Lc max	H max	T/t	min		Pt
		mm	mm	mm	mm	mm	mm	mm	mm	mm	kgf	kgf
05B-2R	05B-2R	8.0	3.0	5.0	2.31	14.30	17.40	7.11	0.75	800	1050	5.64
06B-2R	06B-2R	9.525	5.72	6.35	3.28	23.80	27.10	8.26	1.4/1.1/1.6	1730	1900	10.24
08B-2R	08B-2R	12.70	7.75	8.51	4.45	31.0	34.90	11.81	1.50	3180	3850	13.92
10B-2R	10B-2R	15.875	9.65	10.16	5.08	36.20	40.30	14.73	1.70	4550	5600	16.59
12B-2R	12B-2R	19.05	11.68	12.07	5.72	42.20	46.80	16.13	1.80	5900	6500	19.46
16B-2R	16B-2R	25.40	17.02	15.88	8.28	68.0	73.40	21.08	4.0/3.0	10820	15000	31.88
20B-2R	20B-2R	31.75	19.56	19.05	10.19	79.0	85.10	26.42	4.50/3.50	17350	21700	36.45
24B-2R	24B-2R	38.10	25.40	25.40	14.63	101.0	107.6	33.40	6.0/5.0	28580	36400	48.36
28B-2R	28B-2R	44.45	30.99	27.94	15.90	124.0	131.40	37.08	7.40/6.40	36740	46000	59.56
32B-2R	32B-2R	50.80	30.99	29.21	17.81	126.0	133.90	42.29	7.0/6.0	45920	57000	58.55
40B-2R	40B-2R	63.50	38.10	39.37	22.89	154.0	164.0	52.90	8.50/8.0	64290	81000	72.29
48B-2R	48B-2R	76.20	45.72	48.26	29.24	190.0	200.0	63.88	12.0/9.50	102050	127000	91.21

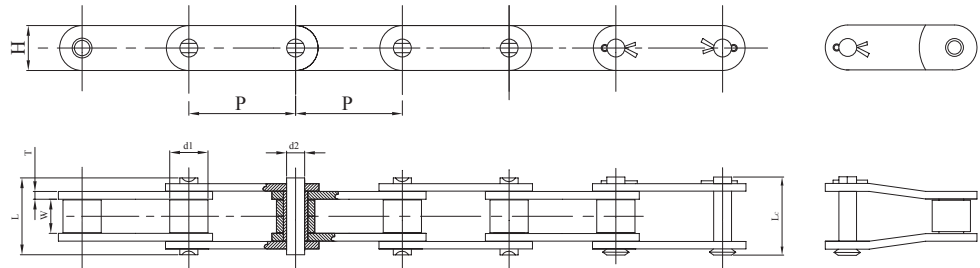
B Series Standard Roller Chain



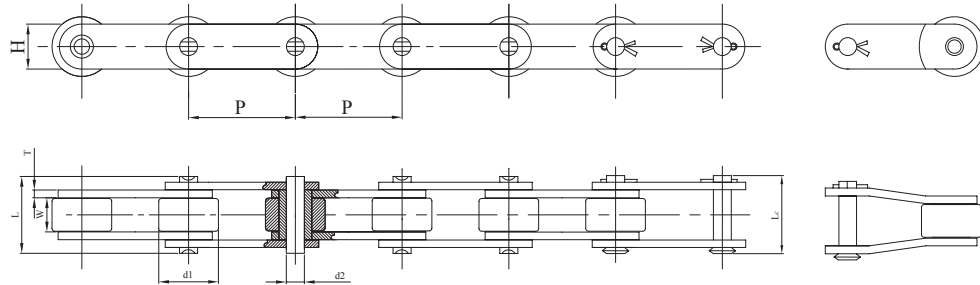
ISO Chain No	KMC Chain No	Pitch	Roller Link Width	Roller Outer Diameter	Pin Outer Diameter	Pin Length		Link Plate Height	Link Plate Thickness	Minimum Tensile Strength	Average Tensile Strength	Transverse Pitch Of Strand
		P	W min	d1 max	d2 max	L max	Lc max	H max	T/t	min		Pt
		mm	mm	mm	mm	mm	mm	mm	mm	mm	kgf	kgf
05B-3	05B-3	8.0	3.0	5.0	2.31	20.90	22.90	7.11	0.75	1135	1475	5.65
06B-3	06B-3	9.525	5.72	6.35	3.28	34.05	37.0	8.26	1.40/1.10	2545	3308	10.24
08B-3	08B-3	12.70	7.75	8.51	4.45	44.90	48.0	11.81	1.50	4550	5915	13.92
10B-3	10B-3	15.875	9.65	10.16	5.08	53.20	56.0	14.73	1.70	6850	8905	16.59
12B-3	12B-3	19.05	11.68	12.07	5.72	61.70	65.70	16.13	1.80	8850	11505	19.46
16B-3	16B-3	25.40	17.02	15.88	8.28	99.90	104.0	21.08	4.0/3.0	16500	21450	31.88
20B-3	20B-3	31.75	19.56	19.05	10.19	116.10	121.0	26.42	4.50/3.50	25550	33215	36.45
24B-3	24B-3	38.10	25.40	25.40	14.63	150.20	155.20	33.40	6.0/5.0	44000	47000	48.36
28B-3	28B-3	44.45	30.99	27.94	15.90	184.30	190.30	37.08	7.40/6.40	54100	60000	59.56
32B-3	32B-3	50.80	30.99	29.21	17.81	184.50	190.50	42.29	7.0/6.0	68400	75000	58.55
40B-3	40B-3	63.50	38.10	39.37	22.89	227.20	234.20	52.96	8.50/8.0	97000	120000	72.29
48B-3	48B-3	76.20	45.72	48.26	29.24	281.60	288.60	63.88	12.0/9.50	153000	180000	91.21

Double Pitch Heavy Duty Conveyor Roller Chain

Standard roller chain



Roller chain with big rollers

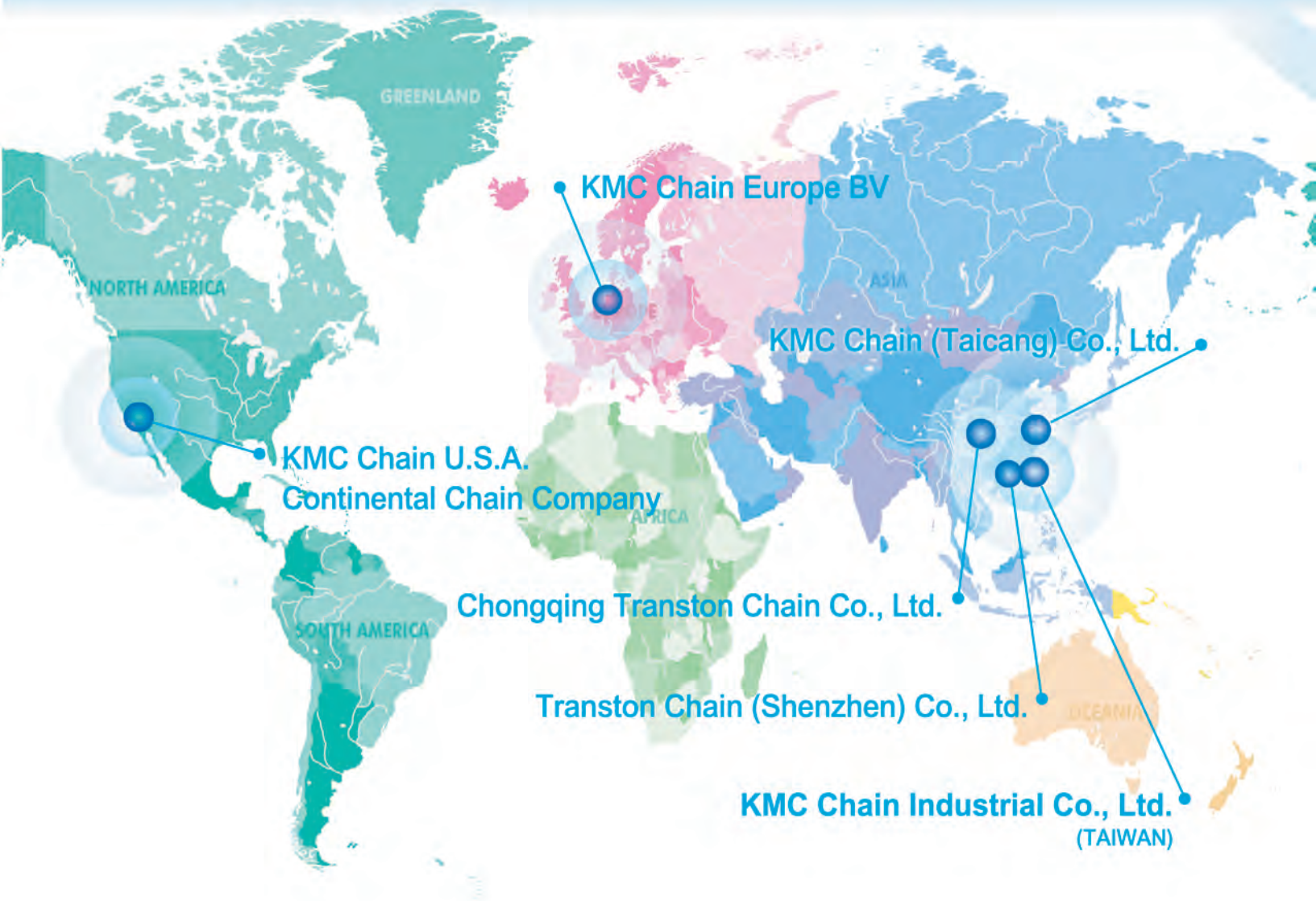


ISO Chain No	ANSI Chain No	KMC Chain No	Pitch	Roller Link Width	Roller Outer Diameter	Pin Outer Diameter	Pin Length		Link Plate Height	Link Plate Thickness	Minimum Tensile Strength	Average Tensile Strength	Allowed Load
			P	W min	d1 max	d2 max	L max	Lc max	H max	T	min	max	
			mm	mm	mm	mm	mm	mm	mm	mm	mm	kgf	kgf
C212AH	C2060H	C2060H	38.10	12.57	11.91	5.96	30.20	34.80	18.0	3.20	3830	4400	640
C212AHL	C2062H	C2062H	38.10	12.57	22.23	5.96	30.20	34.80	18.0	3.20	3830	4400	640
C216AH	C2080H	C2080H	50.80	15.75	15.88	7.94	37.40	42.80	24.10	4.0	6820	8000	1100
C216AHL	C2082H	C2082H	50.80	15.75	28.58	7.94	37.40	42.80	24.10	4.0	6820	8000	1100
C220AH	C2100H	C2100H	63.50	18.90	19.05	9.54	44.50	50.60	30.10	4.7	10650	12500	1900
C220AHL	C2102H	C2102H	63.50	18.90	39.67	9.54	44.50	50.60	30.10	4.7	10650	12500	1900
C224AH	C2120H	C2120H	76.20	25.22	22.23	11.11	55.0	61.60	36.20	5.5	15320	17500	2550
C224AHL	C2122H	C2122H	76.20	25.22	44.45	11.11	55.0	61.60	36.20	5.5	15320	17500	2550
C232AH	C2160H	C2160H	101.60	31.55	28.58	14.29	69.40	77.30	48.20	7.0	27240	29500	4300
C232AHL	C2162H	C2162H	101.60	31.55	57.15	14.29	69.40	77.30	48.20	7.0	27240	29500	4300



www.kmcgroup.com.tw

- Over 800 motorcycle and bicycle manufacturers use KMC chains as genuine parts in the world
- ISO 9001 Certified
- AREA: About 580,000 M²
CAPACITY: Annual 150 Million Meters / 1 Shift
EMPLOYEES: About 4,500 (for Chain Business)



KMC Group



www.kmcgroup.com.tw

KMC (HEADQUARTER)

AMC CHAIN INDUSTRIAL CO., LTD.

No. 11, Alley 55, Lane 264, Jhongshan N. Rd., Yongkang

Dist., Tainan City 710, Taiwan

Tel.: +886-6-232 1141

Fax: +886-6-233 1736

E-mail: kmcic@kmcgroup.com.tw

KMC (U.S.A.)

1713 Lindbergh Court, La Verne, California 91750, USA

Tel.: +1-909-392 2045

Fax: +1-909-392 2049

KMC (EUROPE)

Business Park Friesland West 33 NL-8466 SL Nijehaske

Heerenveen, Netherlands

Tel.: +31-513-650 690

Fax: +31-513-650 740

E-mail: info@kmc-chain.nl

KMC (CHINA)

KMC CHAIN (TAICANG) CO., LTD.

No. 165 Zhenghe Middle Rd., Ludu Town, Taicang City,

Jiangsu Province, China

Tel.: +86-512-5345 7988

Fax: +86-512-5345 0286

E-mail: kmcictc@kmcgroup.cn

KMC (CHINA)

KMC CHAIN (SHENZHEN) CO., LTD.

4th Industrial Area, Longhua Town, Shenzhen, China

Tel.: +86-755-2813 2966-70

Fax: +86-755-2813 2965

E-mail: szkmtstf@public.szptt.net.cn

KMC (CHINA)

CHONGQING TRANSTON CHAIN CO., LTD.

No. 2 Xinfang Rd., Area B, Luohuang Industrial Zone,

Jiangjin Dist., Chongqing City, China

Tel.: +86-23-4763 7728

Fax: +86-23-4763 7726